



# LAKESIDE FLOOD SOLUTIONS

## LAKESIDE ALUMINIUM FLOOD GATE



## PRODUCT DATA SHEET



ENVIRONMENT  
AGENCY

As selected by the Environment Agency





**LAKESIDE**  
FLOOD SOLUTIONS

## LFS Aluminium Swing Flood Gate

Robust, efficient and effective.  
Easy to operate for rapid deployment.

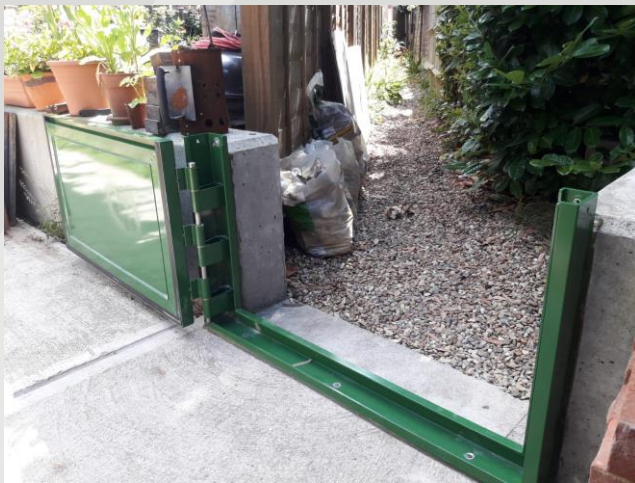
### Specification:

- Material: Alum 6061 + T5
- Plate Thickness: 4mm
- Frame Thickness: 6mm
- Fixing: 90 or 180 degrees opening
- Seals: EPDM Waterproof Seals
- Double or Single Leaf
- Finish Options:
  - a) Standard aluminum finish
  - b) Powder coating to any standard RAL colour

## PRODUCT DATA SHEET

### Key features:

- Robust Aluminium
- Manual measure; easy & quick to deploy by one person
- Zero threshold option available
- Range of bespoke locking mechanisms
- Easy to maintain
- Suitable for a wide range of premises and applications including residential developments, business units, riversides, and utility sites
- Tested with zero leakage in real-life flood events



AS USED BY THE ENVIRONMENT AGENCY



01792 561117

[sales@lakesidefloodsolutions.co.uk](mailto:sales@lakesidefloodsolutions.co.uk)

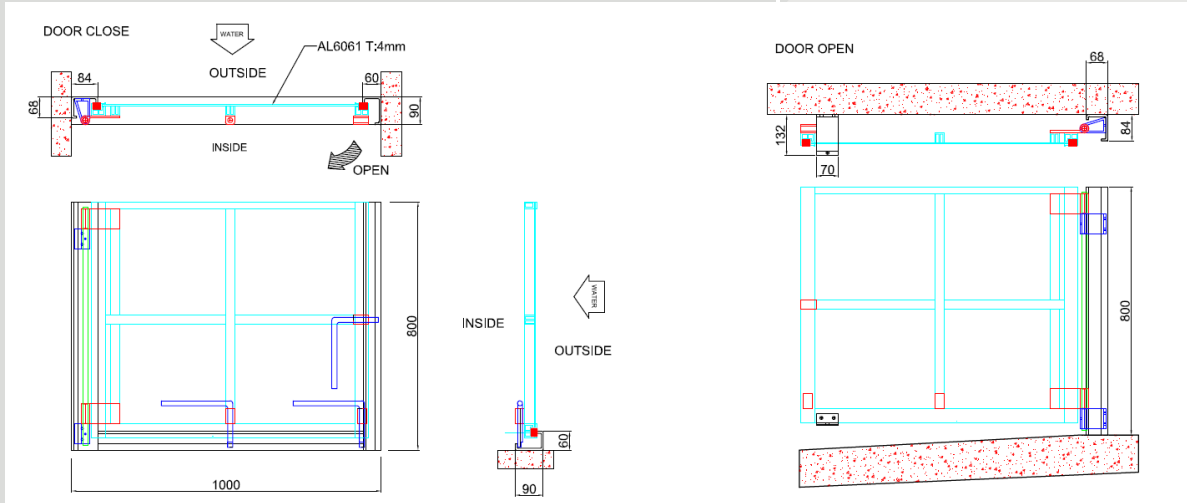
Bruce Road, Fforestfach Industrial Estate, Swansea SA5 4HS



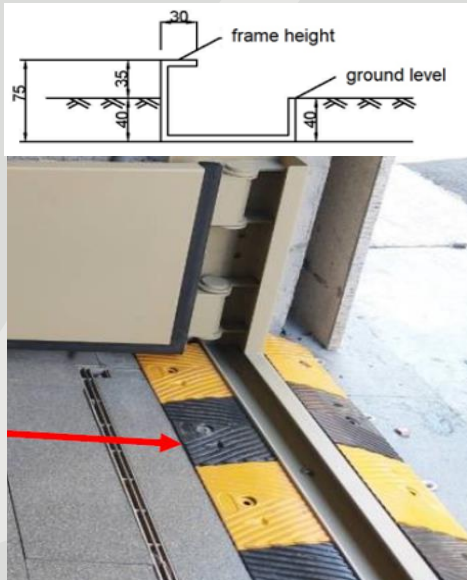
[www.lakesidefloodsolutions.co.uk](http://www.lakesidefloodsolutions.co.uk)



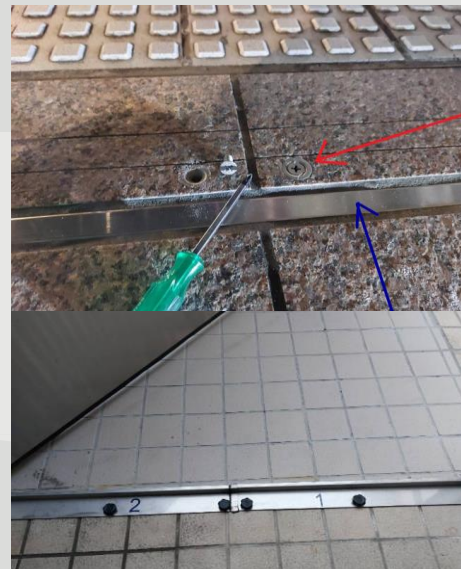
GA Drawings available upon request



**Gate Threshold Options**



**Option A: Threshold with optional ramp**



**Option B: Zero threshold with detachable frame for gate deployment**

