



LAKESIDE FLOOD SOLUTIONS

LAKESIDE GLASS FLOOD WALL



PRODUCT DATA SHEET



LAKESIDE
FLOOD SOLUTIONS

LFS Glass Flood Wall

A unique solution providing robust flood protection coupled with seamless aesthetics.

Overview:

The Glass Flood Wall offers an aesthetically pleasing design whilst not compromising on safety. It allows for unobstructed views of the local landscape whilst providing a highly robust and effective level of protection.

The permanent yet unimposing nature of the Glass Flood Wall results in a passive flood defence measure with zero reliance on manual deployment.

Our Glass Flood Barriers can be customized in length from 1.2 metres to 3 metres for single span barriers, and height of 0.5 to 1.2m metres. The standard glass thickness is 32mm, with greater thickness options available.

PRODUCT DATA SHEET

Key features:

- Seamless visual fit with the existing aesthetics and site outlook
- No maintenance required
- Permanent feature - no manual deployment required
- Posts in lightweight anodized aluminium with high corrosion resistance to ensure longevity
- Maximum single span glass barriers can reach 3 metres wide



01792 561117

sales@lakesidefloodsolutions.co.uk

Bruce Road, Fforestfach Industrial Estate, Swansea SA5 4HS



www.lakesidefloodsolutions.co.uk



Specification:

Glazing

Triple Layer Laminated Tempered Safety Glass
32mm thickness as standard (thicker glass available)
Max height 1200mm'
Max length 3000mm
Density 87.5kg/m²
Top frame in S.S. 304, 1.5mm thickness

Sealant applied around the glazing and frame, ensuring watertight seal

The glass specification ensures that if the glass breaks by excessive strain, it will not fall apart fully but only disintegrate into loosely connected small particles with a few sharp edges, to prevent harm to both people and wildlife

End Posts

Alum 6063-T6
EPDM Waterproof Seals
Max height 1.35m
Section 10mm T x 70mm W x 85mm
Linear 6.75 kg/m
All posts with SS Top Covers

The end posts are secured by gravity to anchor plates embedded into the concrete foundation, transferring the load to the foundation structure

Central Posts

Alum 6063-T6
EPDM Waterproof Seals
Max height 1.35m
Section 20mm T x 85mm W x 140mm
Linear 12.73kg/m

Reinforced bases with 4no. bolts per post
All posts with SS Top Covers

Anchor Plates

SS304 Carbon Steel
350mm H x 160mm W x 265mm L x 10mm G

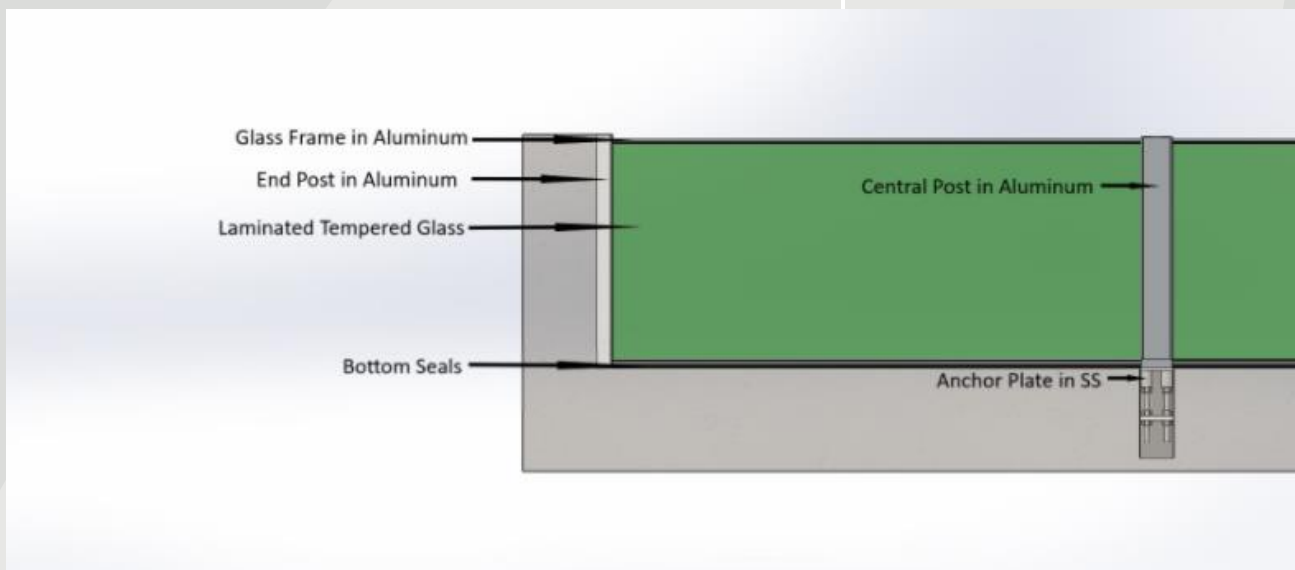




LAKESIDE FLOOD SOLUTIONS

Seals	Glass and posts: EPDM and sealants (transparent) Ground: PE/PU composed
Colour	For posts and glass frames only: <ul style="list-style-type: none">▪ Anodized (Silver, Black)▪ Powder coated (White, Grey, Black)▪ Heat transfer (wood grain)
Surface	Hard Anodizing Silver AA40
Accessories	Includes all seals, bolts and kit of back-up parts

Structure of Glass Flood Wall:



01792 561117

sales@lakesidefloodsolutions.co.uk

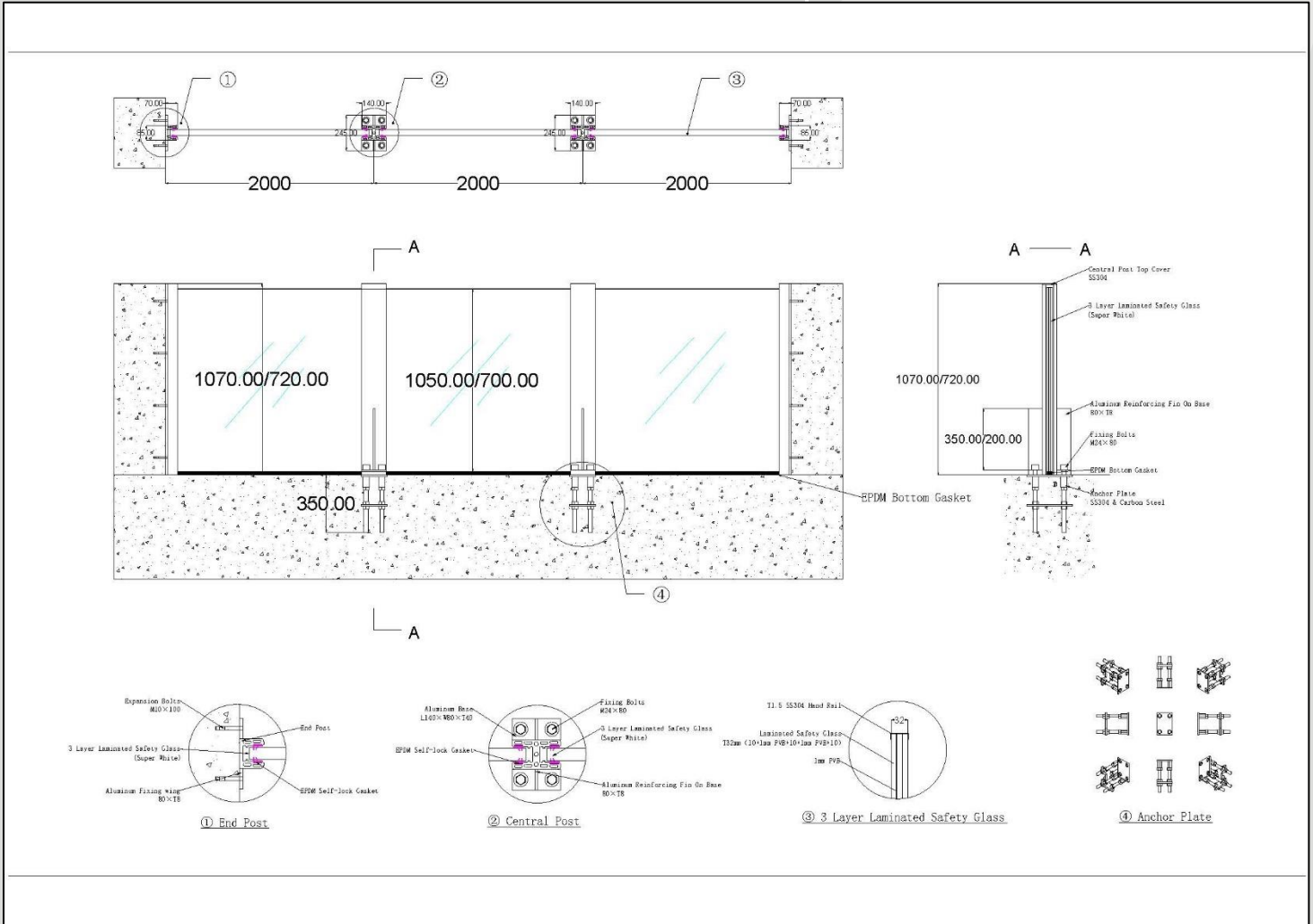
Bruce Road, Fforestfach Industrial Estate, Swansea SA5 4HS



www.lakesidefloodsolutions.co.uk



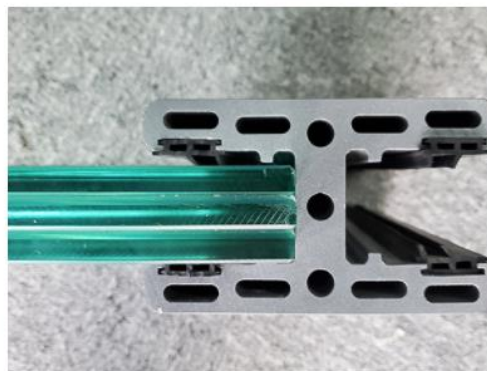
Example GA Design Drawing:





LAKESIDE FLOOD SOLUTIONS

Images:



01792 561117
sales@lakesidefloodsolutions.co.uk
Bruce Road, Fforestfach Industrial Estate, Swansea SA5 4HS



www.lakesidefloodsolutions.co.uk