



LAKESIDE
FLOOD SOLUTIONS



RESIDENTIAL

Leading Supplier &
Installer of Flood
Defence Systems



lakesidefloodsolutions.co.uk

ABOUT US

OUR DELIVERY STANDARDS

Environment Agency:
Minimum Technical Requirements

Construction Industry Research and Information Association (CIRIA):
Code of Practice for Property Flood Resilience

British Standards Institute:
Product Standards

HSE:
CDM 2015 Regulations

Property Care Association:
Flood Protection Group

FENSA:
Door & Window Installations

OUR SERVICES



SURVEY



DESIGN



MANUFACTURE



INSTALLATION



MAINTENANCE



WE DELIVER AND INSTALL NATIONWIDE



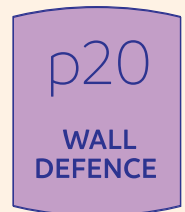
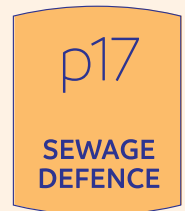
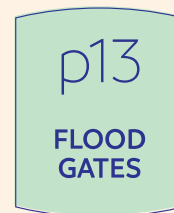
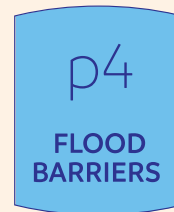


OUR CLIENTS

CONTRACTOR TO
THE ENVIRONMENT
AGENCY
Property Flood
Resilience
Framework
Provider
2018 - 2023



CONTENT







LAKESIDE DEMOUNTABLE FLOOD BARRIER

The UK's Leading System, tested to 2.1m high with zero leakage.

The Lakeside Demountable Flood Barrier is a lightweight, quick and simple flood protection solution. It is one of the most robust forms of flood protection available due to its exclusive interlocking design and bespoke ground U channel ensuring a continuous watertight seal.

The system is extremely versatile and suitable for all types of openings and requirements, from single doors to larger openings such as driveways, up to temporary demountable walls to offer flood protection to entire communities or coastal areas.

The system has no width or height limitation due to its modular nature and bespoke range of demountable middle and corner posts to suit any application.

It also provides the most user-friendly solution as there are no tools required allowing for deployment of the flood barrier within seconds in the event of the flood alert. When the system is not required, it can be easily removed and stored away.



UNIQUE PRODUCT FEATURES

- Robust aluminium yet lightweight; easy to install and store away by one person
- Extremely user-friendly; no tools required for deployment within seconds
- Discreet ground U channel and bespoke interlocking system ensures continuous watertight seal
- Anodized finish, maintenance-free
- Rigorous testing:
 - ✓ Proven to work in real-life floods
 - ✓ Tested up to 2.1m H with zero leakage
 - ✓ Tested to new British Standard 851188
 - ✓ Approved for use under the Environment Agency 2018-2023 Framework Specification
 - ✓ Tested by the Northern Ireland Department of Infrastructure
 - ✓ Withstands force up to 7.92 ton
- Design life 50+ years (subject to ongoing maintenance)



Suitable for a range of openings and protection requirements.



SINGLE DOORS



WINDOWS



FULL DOOR HEIGHT



PATIO DOORS



GARAGES




CONSERVATORIES



BUND WALLS



MULTIPLE OPENINGS



We offer a wealth of tailored accessories to ensure the most efficient and secure deployment, as well as an aesthetically-pleasing finish.

SIDE POST COVER PLATES



STORAGE RACKS



POWDER COATING



STOCK ITEMISATION



TOP LOCKABLE PRESSING CLAMPS



ACCESSORIES STORAGE





TEMPORARY FLOOD BARRIERS

Multi-Cellular Concertina Flood Barrier

Large, collapsible, concertina, multi-cellular unit capable of being stacked up to 2m H.

The system benefits from no permanent fixings and has high adaptability; it is highly versatile for use on a wide range of terrains and easy to store.

The Concertina barrier has been proven to work in real-life emergency responses worldwide and has been rigorously tested to full protocol at US Army Corps of Engineers R&D Centre.



UNIQUE PRODUCT FEATURES

- Stackable
- Easy to store
- Temporary flood barrier, no permanent fixings
- Freestanding, self-supporting and stable system
- Lightweight (when not full) yet robust
- Adaptable, enabling arching & bending
- Suitable for a range of terrains: flat soil; sloping surface; 2.5m/4.0m wide banktop; hard standing
- 3 year warranty
- Tested to full protocol at US Army Corps of Engineers, Engineer R&D Centre, ERDC, Vicksburg



Tempo-Dam

A water-filled dam barrier which is designed for extreme weather and stability. It withstands both dynamic and static environments and is extremely stable.

The system benefits from a rapid deployment speed, as it is just simply rolled out on the ground with no further deployment processes required.



UNIQUE PRODUCT FEATURES

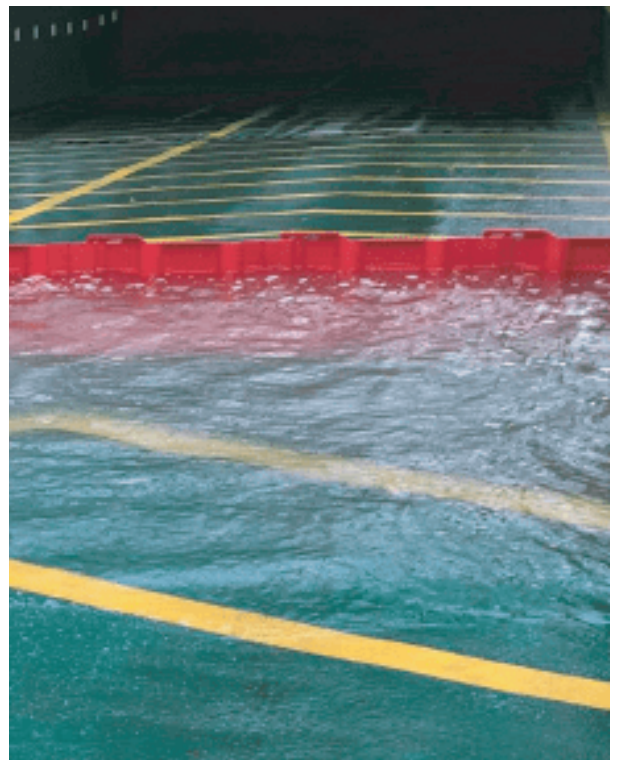
- Designed for extreme weather and stability
- Withstands dynamic and static environments i.e. withstands waves as well as static water
- Extremely stable – unlike other systems, no sandbags and sealant under front end to withstand waves required
- High-specification materials - high-tech, rot-proof sowing tread
- Rapid deployment speed – just roll out
- No pumps required to fill system, relies solely on rising water
- 2 Year Manufacturer's Warranty

TEMPORARY FLOOD BARRIERS

BoxBarrier

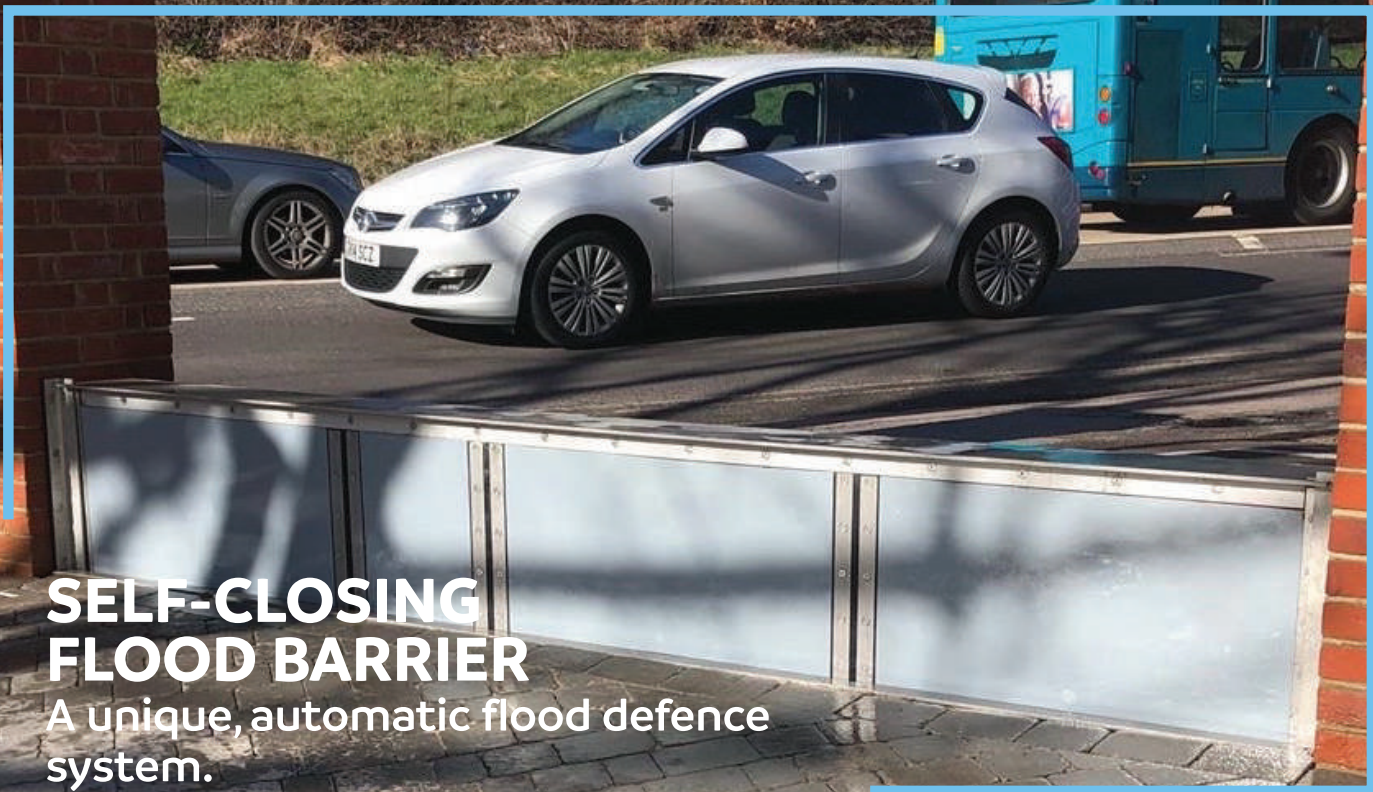
A simple modular system which becomes more stable with higher water pressure. The barrier is very light and easy to deploy in seconds, with minimal storage space required. The system can also be re-used following a flood event.

With one BoxBarrier being equivalent to 15 sandbags, zero maintenance and a 20 year lifespan, the BoxBarrier represents a robust product choice for any surface.



UNIQUE PRODUCT FEATURES

- Simple modular system
- System becomes more stable with higher water pressure
- Bespoke bottom rubber seal
- Light & easy to deploy
- Minimal storage space required
- Coupling & locking mechanism per unit
- Seal on any surface
- Re-usable
- Zero maintenance
- 20 year lifespan



SELF-CLOSING FLOOD BARRIER

A unique, automatic flood defence system.

The SCFB is a passive flood defence measure which is highly suitable for rapid onset flooding, when there is little time to deploy manual measures.

The system uses a simple but ingenious concept of using the approaching floodwater to automatically raise the barrier; effectively using the problem to create the solution.

The barrier can be built to any required length, and is set within a basin made from either PE-HD, concrete, steel or stainless steel. Depending on the required length and location, we can advise the optimal solution for the specific location.



UNIQUE PRODUCT FEATURES

- No energy required – operates even in a power outage
- No manpower – automatically deployed
- No storage – in resting position, the SCFB is invisible and fully self-protected below ground
- Short closing time – and only deploys in the event of a flood
- Low operational cost – high quality elements; simple inspection



uPVC FLOOD DOORS

A popular, passive flood
defence solution.

uPVC flood doors are suitable for both single and double doors. With a wide range of styles and finishes, including an optional wood grain finish, the doors offer flood protection whilst maintaining the existing aesthetics of your property.

The flood doors are tested to protect against flood water up to 600mm high, therefore representing a passive flood defence solution for properties subject to lower levels of flooding.



UNIQUE PRODUCT FEATURES

- High security locking
- Bespoke gasket arrangement
- Certified to British Standard 851188
- Low Threshold (DDA Compliant) available
- Fully Reinforced Galvanised Steel Frame & Sash



COMPOSITE FLOOD DOORS

A popular, passive flood defence solution.

Composite flood doors are suitable for single doors only. With a wide range of styles and finishes, the doors offer flood protection whilst maintaining the existing aesthetics of your property.

A composite flood door also provides the added benefit of superb thermal efficiency, independently tested to be superior to traditional timber doors and timber core composite doors.

The flood doors are tested to protect against flood water up to 600mm high, therefore representing a passive flood defence solution for properties subject to lower levels of flooding.



UNIQUE PRODUCT FEATURES

- High security locking
- Bespoke gasket arrangement
- Certified to British Standard 851188
- Low Threshold (DDA Compliant) available
- Fully Reinforced Galvanised Steel Frame & Sash
- Laminated triple glazed glass
- 70mm double rebate



STAINLESS STEEL FLOOD GATES

An effective, rapid-deployment
flood defence measure.

Our Stainless Steel Flood Gates provide a robust and efficient form of flood protection. Easy to maintain and often operated manually by one person, our flood gates represent a quick deployment option.

The gates are made bespoke to order, and therefore offer a wide range of design and function options.



UNIQUE PRODUCT FEATURES

- Stainless Steel 304 or 316 for marine applications
- 90 or 180 degree opening
- Double or single leaf
- Powder coated to any standard RAL colour
- Timber cladding available
- Lockable
- Zero threshold gates available
- Tested with zero leakage



TIMBER FLOOD GATES

An effective, rapid-deployment flood defence measure.

Timber Flood Gates are suitable for residential single openings or driveways.

With a wide range of styles and finishes available, the gates offer flood protection whilst maintaining the existing aesthetics of your property.



UNIQUE PRODUCT FEATURES

- Accoya Timber – 50 year guarantee against rot above ground
- 70mm thick steel box section frame
- Manufactured bespoke to order to high specification using traditional techniques
- Single or double Leaf
- Simple clamp operation; no tools required for deployment in seconds
- Range of finishes available:
 - sikkens stain
 - dulux weathershield
 - farrow & ball colour-matching service
- Tested to PAS 1188-1:2014



FLOOD WINDOWS

A passive flood defence measure to protect windows from water ingress.



Available in either Aluminium or uPVC, our bespoke flood windows provide robust flood protection yet still provide an aesthetically-pleasing passive flood defence solution.



UNIQUE PRODUCT FEATURES

- uPVC or Slimline Aluminium Frame
- Toughened laminate glass
- uPVC windows certified to British Standard 851188
- Fixed or outward-opening



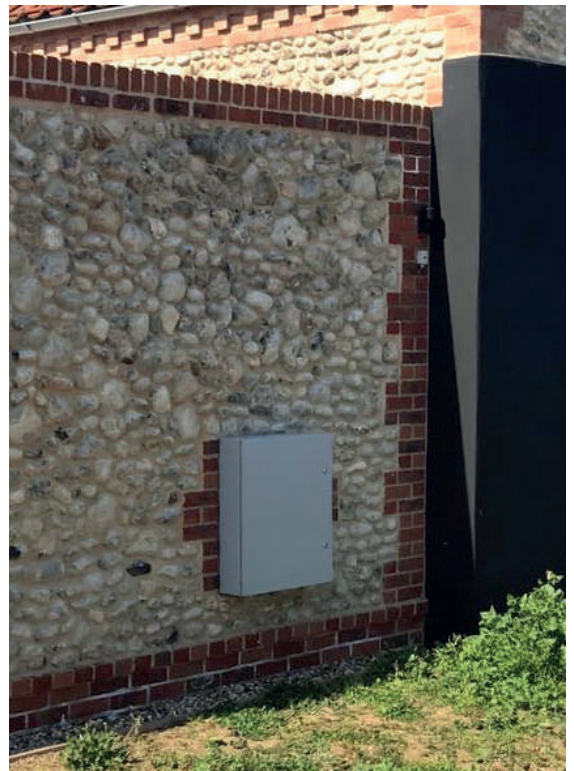
FLOOD CABINETS

A passive flood defence solution to prevent water ingress to electrical metre boxes or telecom equipment.

Flood Cabinets represent an exclusive flood protection device to protect telecom cabinets or electrical metre boxes.

The Flood Cabinets can simply be retrofitted over the existing metre box to ensure a passive, 'automatic' flood protection solution.

Manufactured from robust galvanised steel as standard, the cabinets can be made to any size as required. Additional features include the option of 1 or 2 doors, and inner steel plates.



UNIQUE PRODUCT FEATURES

- Galvanised steel, 1.2mm / 1.5mm thick (size dependent) as standard material
- Single layer metal plate structure
- Inner plates optional
- One or two doors
- Manufactured to any bespoke size
- International test certification: Rosh, IOS9001, CE, IP65
- Standard RAL: 7035 (powder coating available)



SEWAGE DEFENCE

A range of automatic and manual measures to prevent backflow of sewage and rising water both inside and outside a property.



Non-Return Valves

A simple and cost-effective solution to prevent backflow of sewage into a property.

The valves are installed directly to the manhole and represent a passive measure; the valves automatically close to prevent the backflow of sewage through a downstairs toilet in a flood event.



Backwater Valves

A simple device used to prevent backflow through smaller waste water pipes such as kitchen sinks, downstairs showers, washing machines and dishwashers.

The valves are installed directly to the pipe and represent a passive measure; the valves automatically close with rising water.



Sump & Pump Systems

A crucial flood defence solution for properties subject to flood water rising below ground.

The submersible pump system is installed below ground to a bespoke sump. The pump has an integrated float switch which enables it to automatically switch itself on in the event of rising water, pumping water out and away from the premises via fixed discharge pipework.



Surface Water Pumps

Often referred to as “Puddle Suckers”, surface water pumps are positioned outside on the ground surface during rising water to drain water away from the premises. A Surface Water Flood Pump is designed for draining surface water and flood water down to very low levels, to as low as 1mm.

Manual or automatic pump options are available, all provided with a power cable and 10m lay-flat discharge hose (longer lengths available upon request).



Emergency Flood Pump Kits

An emergency kit for pumping away surface water from a property, comprising a powerful Surface Water “Puddle Sucker” Pump with a range of hoses and self-inflating flood sacks.

Discharge hoses are light, easy to position and have quick connections to enable fast deployment.

Supplied in a sturdy easy-carry case.



Toilet Bung

A simple, inflatable device used to minimize sewage backflow through a toilet when a Non-Return Valve cannot be fitted directly to the manhole pipe.



BRICK DEFENCE

A range of automatic and manual measures to prevent water ingress through air bricks and vent openings.

Anti-Flood Air Bricks

An automatic, permanent flood protection solution. The Anti-flood Air Bricks use rising water to automatically shut off, inhibiting water ingress through the airbricks and therefore flooding underneath the property.

However, the anti-flood air bricks are engineered to act like a standard air brick in normal weather conditions, ensuring unrestricted airflow underneath the property.



UNIQUE PRODUCT FEATURES

- Automatic device
- Permanently fitted
- Floating valves to prevent water passing back through the airbrick
- No mesh to restrict airflow which could cause damp and dry rot

Vent Covers

A rapid-deployment option for preventing water ingress to existing air vents.

The vent cover only takes a few minutes to install, and effectively offers flood protection to low lying vents. All fixings are pre-installed to ensure the covers can be easily affixed to the wall when required.



UNIQUE PRODUCT FEATURES

- Easy and quick to deploy
- Available in stainless steel or aluminium
- Waterproof rubber ensures robust seal
- Manufactured bespoke to any size



WALL DEFENCE

A range of passive flood defence measures to prevent water seepage through walls.

Waterproof Wall Sealant

A transparent sealant applied to walls to prevent seepage of water through brickwork or stonework.

This is an important flood protection measure when flood water is longstanding against a property for a significant length of time.

Ancillary Wall Defence Services

- Re-pointing of walls with water-resistant mortar
- Rendering of external walls above flood threshold level
- Sealing of cable entry points with transparent sealant

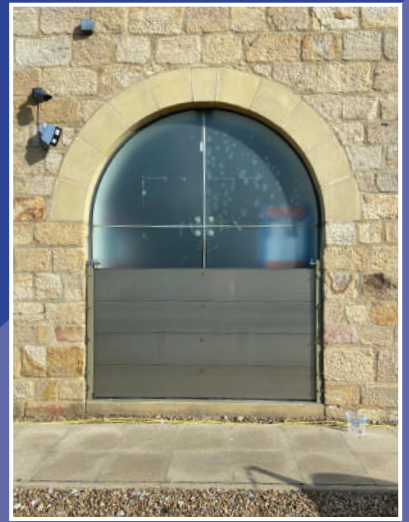
UNIQUE PRODUCT FEATURES

- 100% breathable
- Lasts up to 10 years
- Reduces thermal loss by up to 30%
- Reduced condensation & black mould
- Transparent, no surface colour impact

CASE STUDY

THE HOME OFFICE, UK Border Agency

Waterside Court, Leeds



Property Type: Grade II Listed

Architect: WHp Architect

Main Contractor: Interserve

Products: Lakeside Demountable Aluminium Flood Barriers;
Lakeside Slimline Demountable Aluminium Flood Barriers
Flood Barrier Accessories

Completion Date: February 2022

69no. Lakeside Barriers protect the Home Office from flooding.

*"The barriers have been utilised in the last flood.
On the 20th February 2022 the water reached 450mm above finished floor level
and the building remained dry and operational."*





LAKE SIDE FLOOD SOLUTIONS

Background

West Yorkshire has repeatedly suffered from flood events, with the “worst flood event in 70 years” occurring in 2015. A ‘major incident’ was declared after more than 2000 homes were flooded and left without power, and army troops were called in to assist emergency services. Following the 2015 floods, Lakeside Flood Solutions were contracted to provide flood defence solutions to Waterside Court, the Home Office’s main hub for immigration functions in West Yorkshire. The complex of buildings houses a reporting centre, case working teams and an immigration compliance and enforcement (ICE) team.

Solution

Lakeside installed 69no. Demountable Flood Barriers to the site. In total, 360 metres of barrier was required to protect all potential ingress points to the premises, including both door and window protection.

Bespoke Design Services

Lakeside were selected at project design stage by the architect WHp Architecture, to provide input into the design elements of the flood defences

and their integration with the building. The design stage was of paramount importance due to the Grade II Listed status of the property. This allowed us to provide the following bespoke product innovations for the site:

- Slimline Stainless Steel 304 Barrier Side Posts, only 65mm wide to fit optimally in the narrow door and window opening reveals.
- Storage Container solution.
- Powder coating of barriers to bespoke colour to match the building façade.

Barriers proven to work in last flood

In February 2022, three storms hit the UK within a seven-day period, with Storm Eunice labelled the ‘worst storm in decades’. We are pleased to report that the Lakeside barriers have been proven to work in this latest real-life flood event:

“The barriers have been utilised in the last flood. On the 20th February the water reached 450mm above finished floor level and the building remained dry and operational.”

JPS Projects (Contractor), February 2022



01792 561117

sales@lakesidefloodsolutions.co.uk

Bruce Road, Fforestfach Industrial Estate, Swansea SA5 4HS

www.lakesidefloodsolutions.co.uk

CASE STUDY

Essex County Council

Property Flood Resilience (PFR) Flood Grant Scheme



uPVC Flood Door - Woodgrain



Demountable Aluminium Flood Barrier

Services:

Complete end-to-end management of the PFR Scheme for Essex Council, covering Flood Risk Surveys • Product Selection Survey • Design & Manufacture Installation • Demonstration • Maintenance.

Contract Dates:

October 2018 – March 2022.

Uptake:

296 applications managed since 2018.

Flood Grant:

£8000 available per property.

Appointment:

Lakeside has been appointed as the Flood Protection Specialist to deliver the grant scheme on behalf of the Council since 2018.

Find out more about the different flood protection options available to you:





LAKE SIDE FLOOD SOLUTIONS

Key Specialist Discipline provided by Lakeside

Flood Risk Survey	<ul style="list-style-type: none"> • RICS-certified Flood Risk Surveyor
Product Selection Survey	<ul style="list-style-type: none"> • Listed Building Consent Applications: Elevation Drawings, Heritage Report, Structural Surveys. • Specialist Surveys e.g. Gas / HETAS Engineer, Electrician, Tanking Specialist
Design & Manufacture	<ul style="list-style-type: none"> • Pre-Construction Site Arrangements: RAMS, COSHH, H&S File, Risk Register, Business Continuity Plan • GA Design Drawings
Installation, Demonstration & Training	<ul style="list-style-type: none"> • Trained, certified & highly experienced installation teams; certified Site Supervisor • Commissioning & Handover Pack provided in line with CDM 2015
Maintenance	<ul style="list-style-type: none"> • Annual Maintenance Inspection by certified Surveyor
Ongoing Project Management	<ul style="list-style-type: none"> • Cost Management • Programme & Performance Management • Marketing & Social Value Strategy



uPVC Flood Patio Doors



uPVC Flood Door - White Finish



uPVC Flood Window

Testimonial

"Extremely pleased with all aspects of installation, especially with the quality and efficiency of the Sump Pump and the first class Flood Door... A totally efficient service and installation."

Ms Mills, February 2022

Find out more about the different flood protection options available to you:
[An Introduction to Property Flood Resilience \(PFR\)](#)



Lakeside Flood Solutions Ltd.
Approved Flood Protection Specialist
Tel: **01792 588882 - 01792 561117**
Essex@lakesidefloodsolutions.co.uk

Essex County Council
Established Grant Funding Scheme since 2014
Tel: **0345 603 7631**
floods@essex.gov.uk

www.lakesidefloodsolutions.co.uk

CASE STUDY

Doncaster County Council

Property Flood Resilience (PFR) Flood Grant Scheme



Doncaster
Metropolitan Borough Council



uPVC Flood Door



Demountable Aluminium Flood Barrier

Services: Product Selection Survey
Design & Manufacture • Installation • Demonstration • Maintenance

Installation: Lakeside have installed flood defences to 75 no. properties throughout Doncaster.

Dates: November 2020 – June 2021

Background: In November 2019, South Yorkshire and its surrounding counties were hit by severe flooding after a month's worth of rain fell in one day, resulting in over 800 properties being flooded.

One of the areas badly affected was the village of Fishlake, to the North East of Doncaster, where over 170 properties were impacted by the floods.

One of the measures implemented by Doncaster Council to mitigate the future risk of flooding has been in the form of the Property Flood Resilience (PFR) Grant.

A grant of £5,000 was made available to all homeowners who had experienced flooding during the floods of November 2019.





LAKESIDE FLOOD SOLUTIONS

Services

Lakeside have carried out extensive works in Doncaster, installing flood defences for 75no. properties in total as part of the PFR Grant. We provided end-to-end support for Homeowners to provide guidance through the grant funding process, from survey to installation, training and maintenance. The high-quality nature of our products and services became quickly apparent within the Community and the Council, leading to many word-of-mouth referrals. .

Products

Flood defences covered all potential points of water ingress, including Door & Opening Defence, Brick Defence, Sewage Defence and Wall Defence. A range of both manual measures, such as Flood Barriers, and passive measures, such as Flood Doors were installed, depending on Homeowner preferences and cost requirements within the grant funding budget per property.

Testimonials

Click the link here to see a video which showcases a few examples of our flood defence installations throughout Doncaster: Property Flood Grants in Doncaster

Doncaster: <https://youtu.be/84ODinsw-rM>

The video can be viewed on your phone or tablet by scanning the QR code below.



Flood Barrier Cover Plates



110mm Non-Return Valve to Manhole



42mm Non-Return Valve



Anti-flood Air Bricks



01792 561117
sales@lakesidefloodsolutions.co.uk

Bruce Road, Fforestfach Industrial Estate, Swansea SA5 4HS

www.lakesidefloodsolutions.co.uk

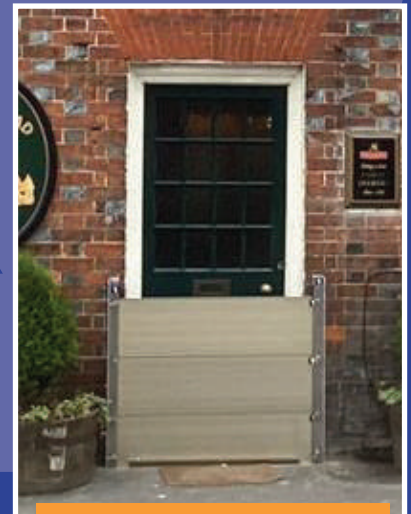
CASE STUDY

Buckinghamshire Council

Property Flood Resilience (PFR) Flood Grant Scheme



uPVC Flood Door - White Finish



Demountable Aluminium Flood Barrier

Project Team:

Managing Agent: AECOM

Principal Designer: RAB Consultants Ltd.

Principal Contractor: Lakeside Flood Solutions



No of Properties:

40

Location:

Pednormead End, Chesham

Services:

Product Selection Survey • Design & Manufacture • Installation • Demonstration • Maintenance

Dates:

September 2020 – October 2022



01792 561117

sales@lakesidefloodsolutions.co.uk

Bruce Road, Fforestfach Industrial Estate, Swansea SA5 4HS

www.lakesidefloodsolutions.co.uk



LAKESIDE FLOOD SOLUTIONS

Products:

Flood defences covered all potential points of water ingress, including Door & Opening Defence, Brick Defence, Sewage Defence and Wall Defence.

A range of both manual measures, such as Flood Barriers, and passive measures, such as Flood Doors were installed, depending on Homeowner preferences and cost requirements within the grant funding budget per property.

The Pednormead End PFR Scheme was one of the first schemes under which the Flood Barriers installed had been tested to the new British Standard BS 851188.

Services:

A wealth of specialist services were required as part of the scheme:

- ✓ Structural Surveys & Reports
- ✓ Elevation Drawings (both existing and proposed elevations)
- ✓ Heritage Survey with Heritage
- ✓ Statement and Impact Assessment
- ✓ Listed Building Consent Applications
- ✓ Lime Mortar Specialist Surveys
- ✓ Gas Engineer
- ✓ Electrician

In addition to the above, the Project Team successfully delivered a Flood Exercise Day for the Community on project completion.

A Key Challenge – How to Preserve the Historic Status of Pednormead End

Challenge: Pednormead End is a historic area with conservation area status where there are many listed buildings dating back to the 15th century. The properties typically have doorways with very narrow openings reveals and are located on restricted footpaths.

Solution: Bespoke product innovations were developed for the scheme, specifically tailored to the listed properties in the Community, including:

- ✓ Slimline Flood Barrier Side Posts, to reduce the protrusion depth onto the footpaths
- ✓ Slimline, Rounded Flood Barrier Side Post Cover Plates, providing a dual function of being both:
 - a) aesthetically-pleasing, powder coated to a range of bespoke RAL colours to match the existing property façade
 - b) a Health & Safety measure to conceal the side post fixings
- ✓ Lime Mortar colour-matching service, a first for PFR

The Project Team worked closely with both the Heritage Team and Highways Team at the Council in order to obtain approval for the above innovation.



uPVC Flood Door - Coloured Finish



Demountable Aluminium Flood Barriers

Testimonial:

"I'm very pleased with the products supplied and installed. The flood doors are of excellent quality and fit. It was a pleasure to deal with a company which had knowledgeable, friendly and efficient staff, who were willing to go the extra mile to help. The scheme was managed very efficiently by all the staff involved, both at Lakeside and the Council, and any queries were dealt with promptly and satisfactorily."
Ms. Aris



01792 561117

sales@lakesidefloodsolutions.co.uk

Bruce Road, Fforestfach Industrial Estate, Swansea SA5 4HS

www.lakesidefloodsolutions.co.uk



LAKESIDE FLOOD SOLUTIONS

CASE STUDY

BT



Lakeside selected to protect 15no. BT utility sites nationwide



Stainless Steel Flood Escape Hatch - Bicester



Demountable Aluminium Flood Barrier - Rochdale



Demountable Aluminium Flood Barrier - Newry

Client: MJ Quinn (Main Contractor)



No of Sites: 15

Location: Wales, England and Northern Ireland

Services: Product Selection Survey • Design & Manufacture • Installation • Demonstration • Maintenance

Dates: March – December 2022



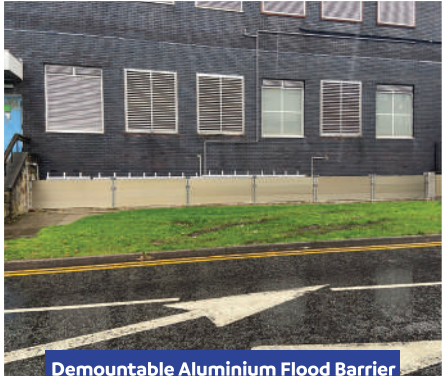
You Tube



01792 561117
sales@lakesidefloodsolutions.co.uk
Bruce Road, Fforestfach Industrial Estate, Swansea SA5 4HS

www.lakesidefloodsolutions.co.uk

ROCHDALE



Demountable Aluminium Flood Barrier & Stainless Steel Flood Gate (Front)

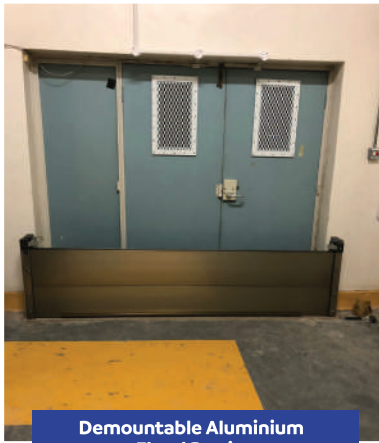


Demountable Aluminium Flood Barrier & Stainless Steel Flood Gate (Rear)

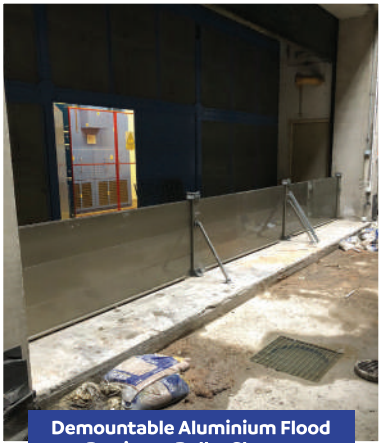


Stainless Steel Flood Gate

SHEFFIELD



Demountable Aluminium Flood Barrier



Demountable Aluminium Flood Barrier to Roller Shutter

SHREWSBURY



Stainless Steel Double Flood Gate

BLACKBURN



Stainless Steel Double Flood Gate



Stainless Steel Single Flood Gate



Stainless Steel Single Flood Gate

CASE STUDY

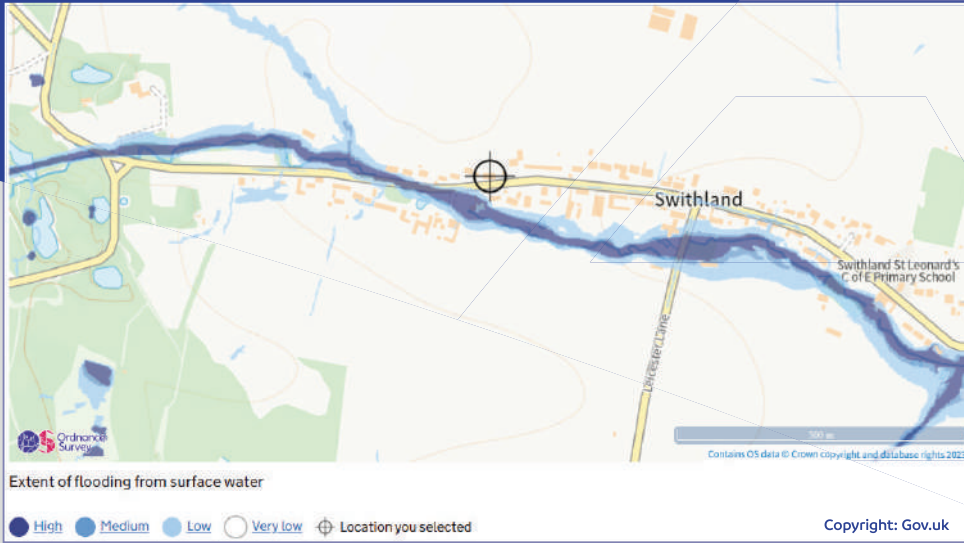
Leicestershire County Council



Swithland PFR Flood Grant Scheme



Flood Barrier Side Post Cover Plates



Perimeter Demountable Aluminium Flood Barrier to Conservatory

Location: Swithland, Leicestershire

No. Properties: 23 (17no. of which were Grade II Listed properties)

Services:

- Product Selection Survey
- Design & Manufacture
- Installation
- Demonstration
- Maintenance

Dates: March 2022 – February 2023

Find out more about the different flood protection options available to you:



YouTube



01792 561117
sales@lakesidefloodsolutions.co.uk

Bruce Road, Fforestfach Industrial Estate, Swansea SA5 4HS

www.lakesidefloodsolutions.co.uk



LAKESIDE FLOOD SOLUTIONS

Background:

There are several contributory elements to previous flood events in Swithland; a combination of excessive rainfall, significant run-off from surrounding land, large impermeable areas, profiling of surrounding land, and overloading of local drainage assets. One of the measures implemented by Leicestershire County Council to mitigate the future risk of flooding has been in the form of the Property Flood Resilience (PFR) Grant.

Services:

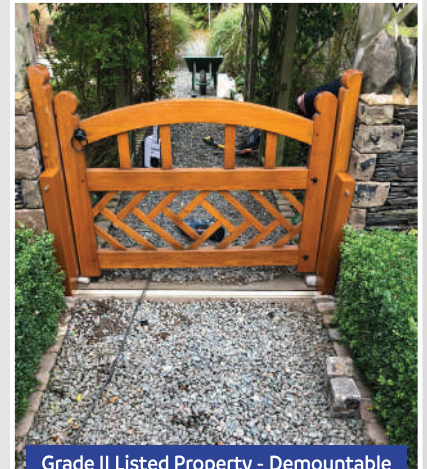
Lakeside have increased the flood resilience to 23no. properties as part of the scheme.

We provided end-to-end support for Homeowners to provide guidance through the grant funding process, from survey to installation, training and maintenance. Independent post-installation surveys and reports were also arranged to verify the works carried out and provide independent assurance in terms of quality and suitability of the measures installed.

Products:

Flood defences covered all potential points of water ingress, including Door & Opening Defence, Brick Defence, Sewage Defence and Wall Defence.

A range of both manual measures, such as Flood Barriers, and passive measures, such as Flood Doors were installed, depending on Homeowner preferences and property type.



Grade II Listed Property - Demountable Aluminium Flood Barrier (Not Deployed)



Grade II Listed Property - Demountable Aluminium Flood Barrier

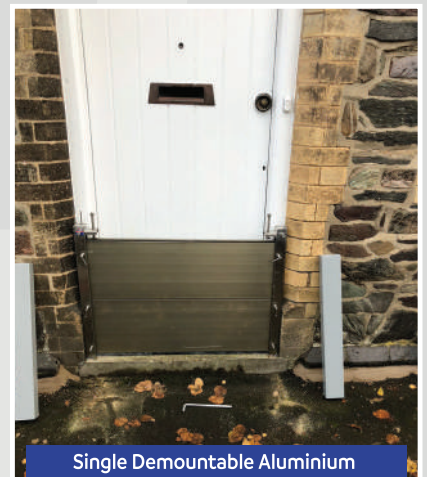
Testimonial:

"I have received positive feedback about the staff used by Lakeside - considerate, polite, helpful and from my own observations, I can see some quality fitments in doorways."

David, Local Flood Warden
December 2022



Single Demountable Aluminium Flood Barrier (Not Deployed, with Side Post)



Single Demountable Aluminium Flood Barrier (Deployed)









LAKESIDE FLOOD SOLUTIONS



Unit 2E Invest House, Bruce Road,
Fforestfach, Swansea, SA5 4HS



01792 561117



sales@lakesidefloodsolutions.co.uk



lakesidefloodsolutions.co.uk

